

VIAJES TAURO

E-bike experience - Gravel Routes - Road Race Routes

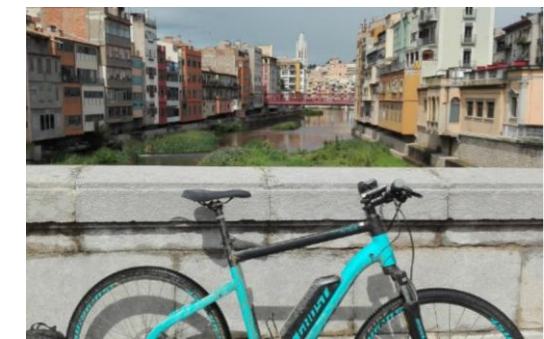


E-bike experience

*S*porty route

*GIRONA /
PONT DE PEDRA*

Route along the green way from Platja d'Aro to Girona city through the countryside ;;;



Distance: 65km go/back

Duration: 4h30

Gain level: 425m

Skills: Easy

Effort: Moderate.

Bike to Use: e-bike

Ghost Square Cross

Price include:

Bike + Helmet

Guide

Transfer back optional



*T*ERMAL ROUTE

*CALDES DE
MALAVELLA*

Amazing village well known by his natural water sources and hotsprings, we visit the old Roman Termas, pleasant trails through the forest.



Distance: 63km go/back

Duration: 4h

Gain level: 440m

Skills: Easy

Effort: Moderate.

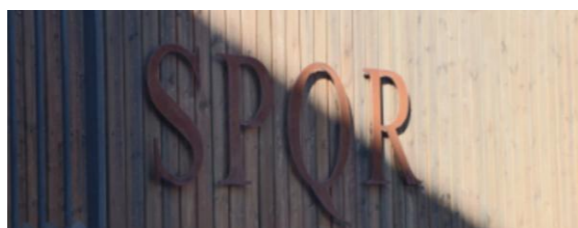
Bike to Use: e-bike

Ghost Square Cross

Price include:

Bike + Helmet

Guide



*M*edieval Emporda

*PALS/
PERETALLADA*

Exploring the secret Emporda treasures small beautiful villages with a medieval urbanism still present, narrow streets and beautiful churches.



Distance: 54km

Duration: 4h

Gain level: 460m

Skills: Easy

Effort: Easy

Bike to Use: e-bike

Ghost Square Cross

Price include:

Bike + Helmet

Guide



*C*osta Brava

*TAMARIU/
PERETALLADA*

Coastal route along the heart of the Costa Brava, we visit some of the most charming villages, Tamariu, Calella de Palafrugell.



Distance: 56km

Duration: 4h

Gain level: 420m

Skills: Easy

Effort: Moderate.

Bike to Use: e-bike

Price include:

Bike + Helmet

Guide

Transfer to start point



Gravel routes *amazing trails non asphalt with a road bike*

*S*porty route

*GIRONA /
PONT DE PEDRA*

Route along the green ways from Platja d'Aro to Girona city through the countryside ;;;



Distance: 80km go/back

Duration: 5h

Gain level: 425m

Skills: Easy

Effort: Moderate.

Bike to Use: Gravel bike

Price include:

Bike + Helmet

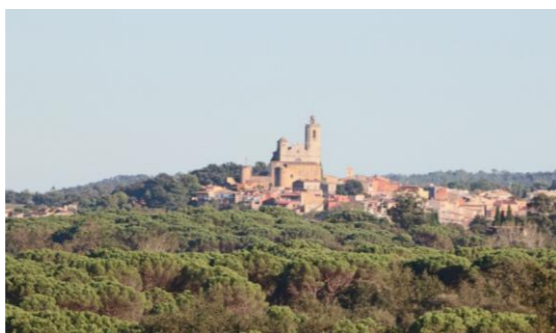
Guide



*T*ERMAL ROUTE

*CALDES DE
MALAVELLA*

Amazing village well known by his natural water sources and hotsprings, we visit the old Roman Termas.pleasant trails trthrough the forest.



Distance: 63km go/back

Duration: 4h

Gain level: 440m

Skills: Easy

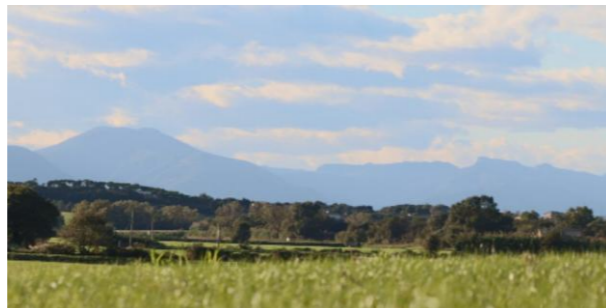
Effort: Moderate.

Bike to Use: Gravel bike

Price include:

Bike + Helmet

Guide



*M*edieval Emporda

*MADREMANYA/
MONELLS*

Exploring the secret Emporda treasures small beautiful villages with a medieval urbanism still present, narrow streets and beautiful churches.



Distance: 56km

Duration: 4h

Gain level: 380m

Skills: Easy

Effort: Easy

Bike to Use: Gravel bike

Price include:

Bike + Helmet

Guide



*P*irinexus

*CAPMANY/
L'ESCALA*

We follow the route who cross from France to the south at the coast, we start to the border till our hotel in Platja d'Aro, amazing route, mix of asphalt and dirt roads ;;;



Distance: 90km

Duration: 4h

Gain level: 410m

Skills: Moderate

Effort: Moderate plus.

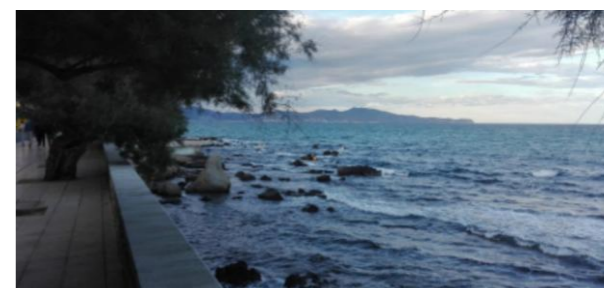
Bike to Use: Gravel bike

Price include:

Bike + Helmet

Transfer to the start point

Van support + Guide



Road race routes

*S*porty route

*GIRONA /
Els Angels*

Intense route by the Girona countryside reaching the mitic col “Els Angels” close to the city and back by the wonderful little medieval villages, Monells.



Distance: 95km
Duration: 5h
Gain level: 1049m
Skills: Moderate
Effort: Moderate++
Bike to Use: Road race
Price include:
Bike + Helmet
Guide

A complete vision of the Girona cycling area and will discover why more than 90 professional racers are living here, “Els Angels” just come with us and climb this mitic Col.

*R*oute des Cols

*Romanya/St Pellaia
La Ganga*

Classic of classics, 3 of the best Cols of the area, spectacular landscapes and not very long way, pleasant route, a must in Platja d’Aro.



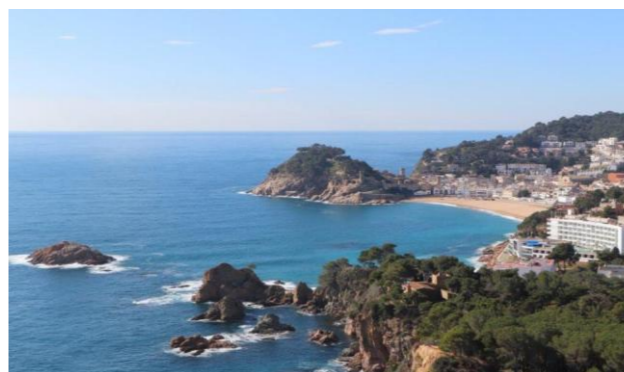
Distance: 85km
Duration: 4h
Gain level: 787m
Skills: Moderate
Effort: Moderate.
Bike to Use: Road race
Price include:
Bike + Helmet
Guide

Really nice route reaching 3 of the most popular Cols in the area, affordable, quiet roads and nice landscapes from the Pyrenees to the sea, our 5* favorite route.

*C*oastal Road

*Tossa de Mar/
Sant Grau*

Another Must in the area, the road who follows the coast to Tossa de Mar and the popular climb to the church of Sant Grau, stunning views of this Mediterranean coast.



Distance: 85km
Duration: 4h
Gain level: 1230m
Skills: Moderate
Effort: Moderate Plus++
Bike to Use: Road race
Price include:
Bike + Helmet
Guide

Spectacular route but a continuous up/down it's a demanding stage compensated by the amazing views, a good condition is recommended

*C*osta Brava

*Emporda/ PALS
MONELLS*

Rolling route through the fields of the heart of the Emporda area, entertaining and pleasant. We discover our countryside.



Distance: 54km go/back
Duration: 3h
Gain level: 520m
Skills: Easy
Effort: Easy
Bike to Use: Road race
Price include:
Bike + Helmet
Guide
Transfer to start / back

Easy route mostly flat with short climbs, visiting several little stunning villages at the heart of Emporda area, this is the real cycle tourism!!!